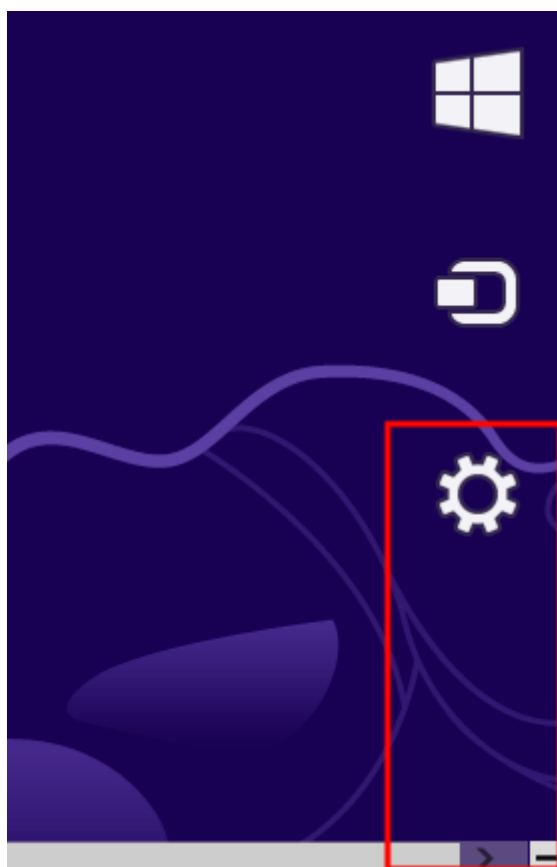


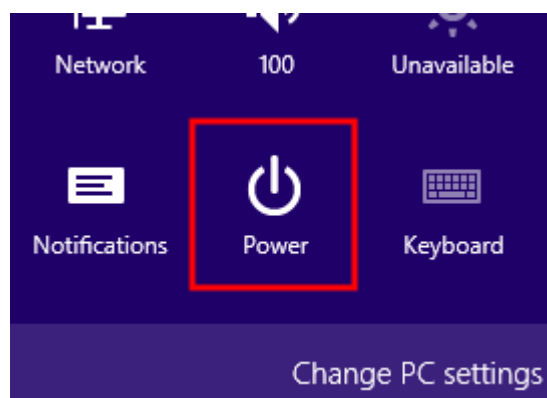
## How to install an unsigned driver on Windows 8

Windows 8 by default will not let you install unsigned drivers. In order to install an unsigned driver, you can follow the steps shown below to start Windows 8 in "Disable Driver Signature Enforcement" mode.

Move the cursor over the top or bottom right corner of the screen and it will show extra options on the right side of the screen (This is the new Charm Bar in Windows 8). Choose the Settings option (icon looks like a Gear).



Choose **Power** option



Choose **General** on the left hand side and then click **Restart now** button on the right

Share

General

Privacy

Devices

Wireless

Ease of Access

Remove everything

If you want to recycle your PC or settings.

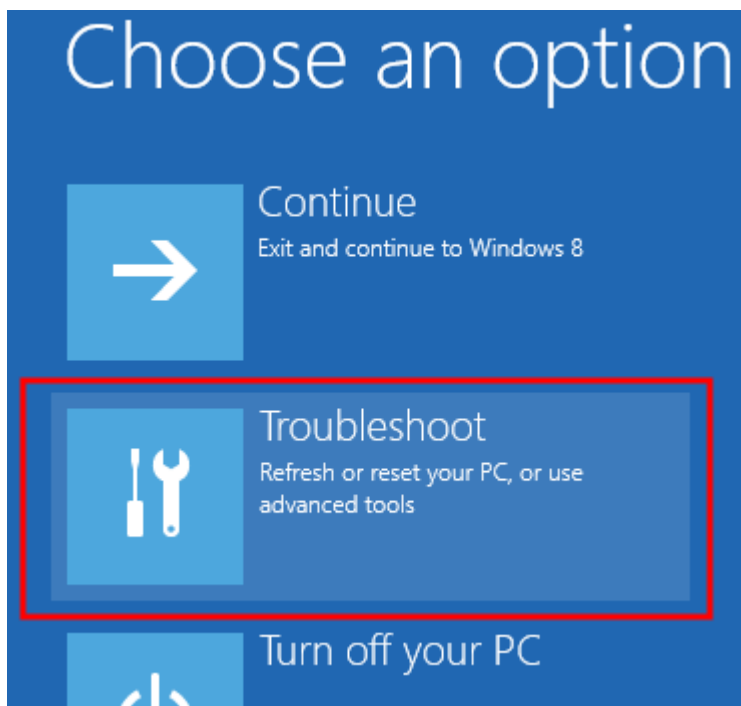
Get started

Advanced startup

Start up from a device or disc (such as a USB drive), or restore Windows

Restart now

Click **Troubleshoot**



Click **Advanced options**

# ← Troubleshoot



## Refresh your PC

If your PC isn't running well, you can refresh it without losing your files



## Reset your PC

If you want to remove all of your files, you can reset your PC completely



## Advanced options

Click **Startup Settings**

# Advanced options



## System Restore

Use a restore point recorded on your PC to restore Windows



## Command Prompt

Use the Command Prompt for advanced troubleshooting



## System Image Recovery

Recover Windows using a specific system image file



## Startup Settings

Change Windows startup behavior



## Automatic Repair

Fix problems that keep Windows from

Click the **Restart** button

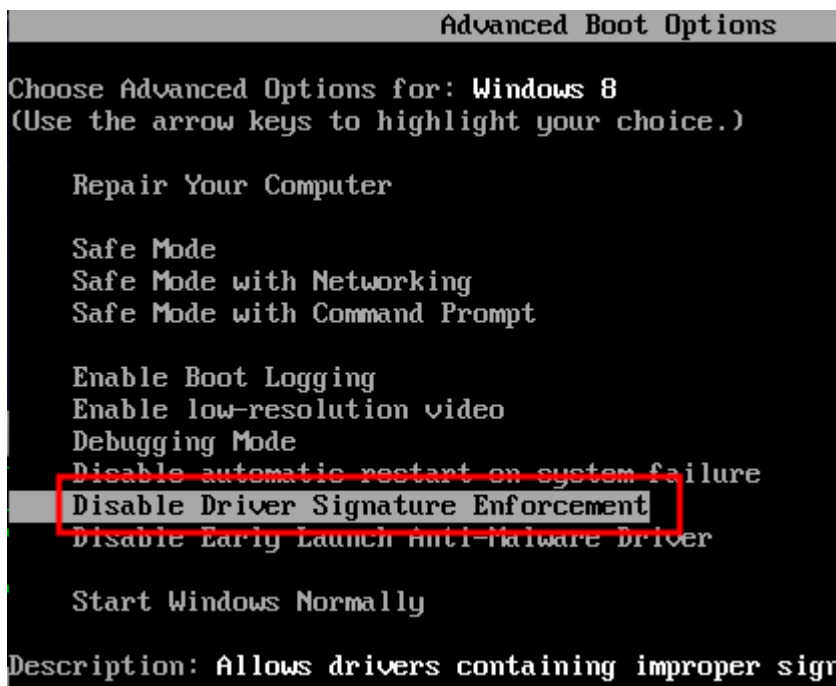
# Startup Settings

Restart to change Windows options such as:

- Enable low-resolution video mode
- Enable debugging mode
- Enable boot logging
- Enable Safe Mode
- Disable driver signature enforcement
- Disable early-launch anti-malware protection
- Disable automatic restart on system failure

Restart

Choose the **Disable Driver Signature Enforcement** and hit the Enter key to start Windows



You should now be able to install the driver needed. After the driver installs, you can reboot the computer and it should revert back to enabling driver signature enforcement again.